

IP Camera



CT-SMWF2017-EN
IP Camera

Introduction

The IP Camera is a new generation camera which is a combination of traditional camera and the network technology. It can transmit the image to the other side of the earth through the network. You can monitor the image as long as through a standard web browser (such as Internet Explorer, Firefox, Google and Safari) or APP.

The IP Camera is a new generation product, in addition to have all image capture functions of the traditional camera, a digital compression controller and a WEB based operating system are also built in the IP Camera, making the compressed and encrypted video data to send to the terminal user through the local area network, the Internet or the wireless network. According to the IP address of the IP Camera, the remote user can login and monitor the camera through a PC or mobile APP, and they can do the real time editing and storage of image data at that time, In addition, they can also control the camera PTZ and lens, to carry out a full range of monitoring.

Technical Information

- Support the computer monitor and mobile phone monitor
- Support HD megapixels
- Support WPS
- Support 24 hours of video storage through the TF Card

Specifications

- Radio protocol: WIFI (IEEE 802.11b/g/n) 2.4G
- Cable Network: RJ45 10/100MB adaptive Ethernet interface
- Pixels: 1280×960 (1.3 million pixels)
- Mobile phone monitoring: iPhone, Android mobile phone client
- The maximum storage: support 64G TF Card
- Stream: three streams
- Audio: support
- The detection angle: 80 ° (diagonal)
- IR-CUT: infrared night vision, color filter automatic switching, support manual closing night vision function
- The night vision effect: 8 LED light night vision 8 meters
- Alarm detection: motion detection
- The rotation angle: 355° (horizontal) , 120° (vertical)
- The monitoring area: support for 1 independent picture detection
- The shape of material: plastic (ABS)
- Working environment: indoor use
- Working temperature: -5~+50°C
- Working humidity: 10%~80%RH

- Power supply: DC5V 2A
- Dimension: 115×90×120mm (length×width×height)
- Weight: 0.53KG
- Accessories: power adapter, manual, antenna, mounting bracket, mounting screws

Operation

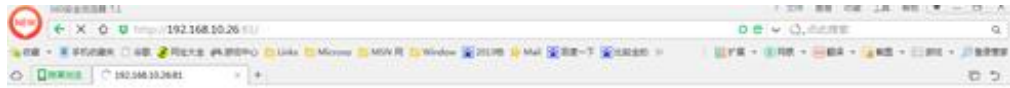
The steps are as following:

- 1. Connect the IP Camera with the LAN port of the HOST with a network cable.**
- 2. Do the following configurations of the HOST & IP Camera.**
 - 1) Enter the WEB interface of the HOST, and record the MAC & IP address of the IP Camera which are the HOST assigned.

Device List

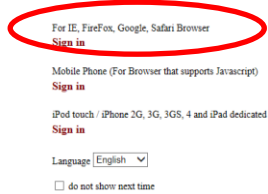
Hostname	MAC	IP Address	WLAN/LAN	Mode of Distribution
Broadlink_RM2-a	B4:43:0D:AA:6A:64	192.168.10.2	Lan	DHCP
android-5e03671	64:B4:73:4C:A8:7E	192.168.10.3	Lan	DHCP
Broadlink_SPMIN	B4:43:0D:96:09:3E	192.168.10.4	Lan	DHCP
Broadlink_EAIR-	B4:43:0D:70:05:04	192.168.10.5	Wlan	DHCP
Broadlink_RM2-3	B4:43:0D:38:77:70	192.168.10.6	Wlan	DHCP
Broadlink_SP2-1	B4:43:0D:11:32:38	192.168.10.7	Wlan	DHCP
Unknown Name	08:D8:33:F3:68:7D	192.168.10.8	Wlan	DHCP
android-5a8a463	CC:07:E4:12:7A:35	192.168.10.9	Lan	DHCP
USER-T6-PC	80:00:0B:32:A9:6F	192.168.10.10	Lan	DHCP
Banana	F0:DB:E2:98:77:48	192.168.10.11	Lan	DHCP
android-f4710b1	F0:25:B7:48:49:E0	192.168.10.12	Lan	DHCP
android-e5bcd29	88:32:9B:EF:17:6F	192.168.10.13	Lan	DHCP
CAPdeAir-3	34:36:3B:6F:58:76	192.168.10.14	Lan	DHCP
Miless-iPhone-4	78:7E:61:B5:4D:35	192.168.10.19	Lan	DHCP
USER-of1-PC	08:57:00:88:47:B9	192.168.10.22	Lan	DHCP
Unknown Name	5C:59:48:E8:CA:0E	192.168.10.25	Lan	DHCP
IPCAM	00:A1:DF:F5:59:73	192.168.10.26	Lan	DHCP

- 2) Input the IP & HTTP Port (the default HTTP port 81) of the IP Camera in the browser, such as: 192.168.10.26:81. Login the configuration interface of the IP Camera, and input correct username & password (username & password can be seen at the bottom of the IP Camera).

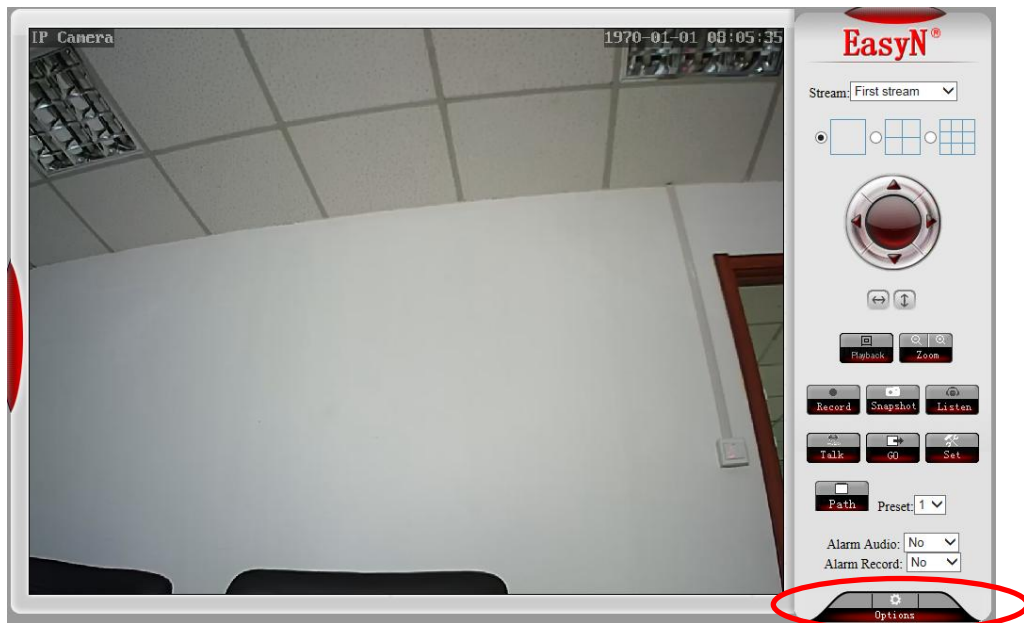


- 3) Select the appropriate way to login the IP Camera configuration interface, and if you login from PC, please choose the first way to login, as shown in figure:

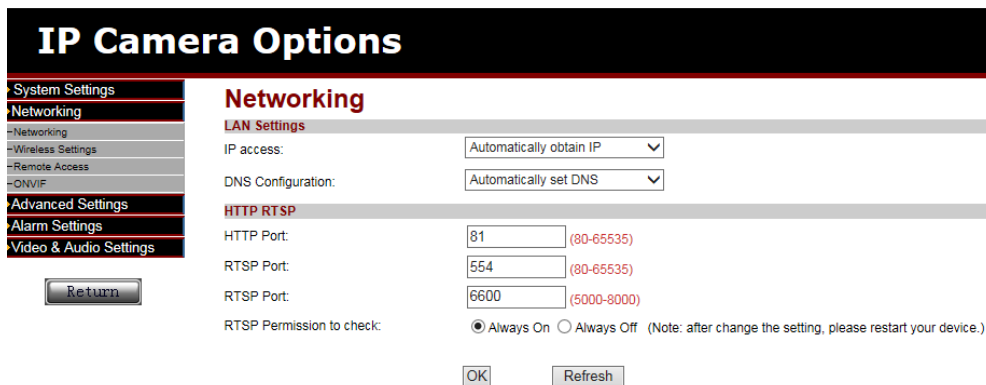
IP Camera



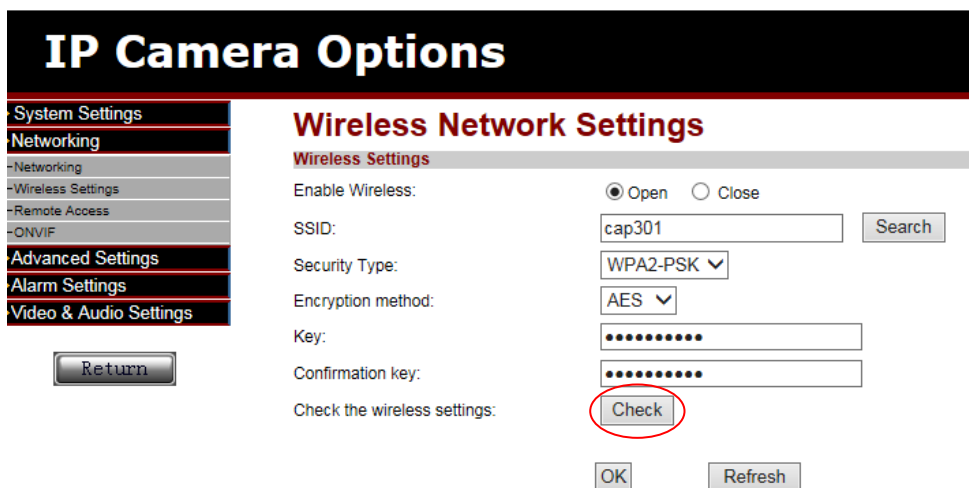
- 4) Click "Options" to enter the settings interface of the IP Camera.



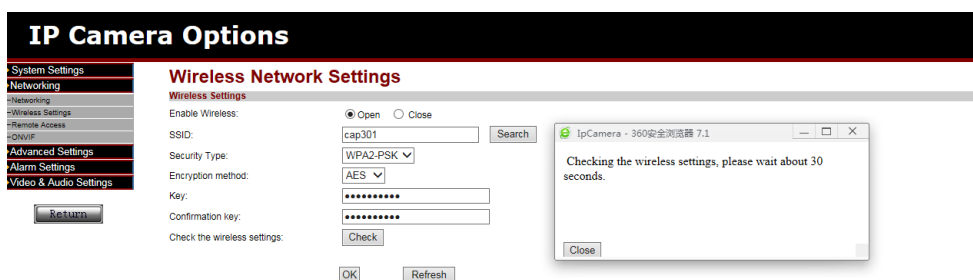
- 5) Enter the Networking configuration interface, note or modify the HTTP port (used for the Port Forward configuration).



- 6) Enter the Wireless Settings interface, enable wireless network, search the SSID, and select the corresponding Security Type & Encryption method, and input the correct Key & Confirmation key, then click "Check" to check wireless settings.

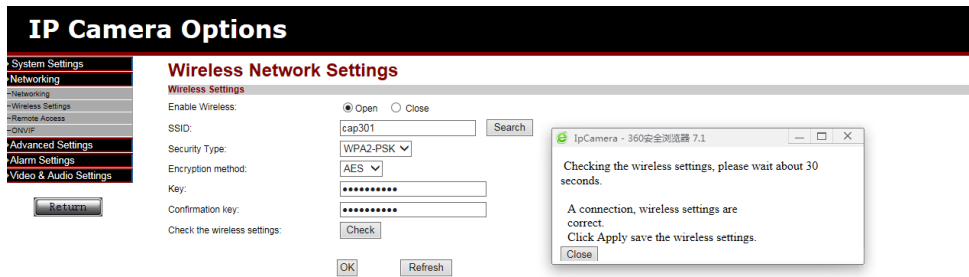


- 7) It will pop-up message: "Checking the wireless settings, please wait about 30 seconds."

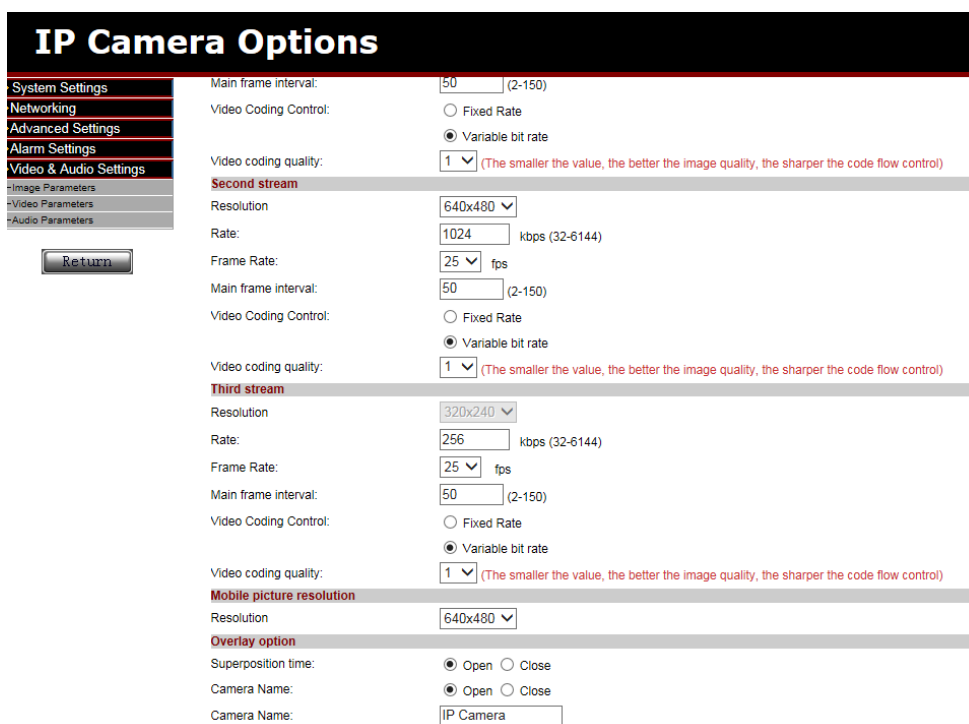


- 8) Wait about 30 seconds, a message will pop-up: "A connection, wireless settings are correct. Click Apply save the wireless settings."

According to the message, click "Apply" to complete the Wireless Network Settings.



- 9) In order to keep the viewing effect, please put the Video coding quality value to a minimum number, and put the Mobile picture resolution (Resolution) to a maximum number.



- 10) Disconnect the network cable between IP Camera and HOST, and then restart the IP Camera.
- 11) Enter the WEB interface of the HOST, record the IP address & MAC of the IP Camera in the device list (Using for the binding of the Wireless MAC address (IP Camera) and the HOST Reserved MAC Address).

Device List

Hostname	MAC	IP Address	WLAN/LAN	Mode of Distribution
Broadlink_RM2-a	B4:43:0D:AA:6A:64	192.168.10.2	Wlan	DHCP
android-5e03671	64:B4:73:4C:A8:7E	192.168.10.3	Wlan	DHCP
Broadlink_SPMIN	B4:43:0D:96:09:3E	192.168.10.4	Wlan	DHCP
Broadlink_EAIR-	B4:43:0D:70:05:04	192.168.10.5	Wlan	DHCP
Broadlink_RM2-3	B4:43:0D:38:77:70	192.168.10.6	Wlan	DHCP
Broadlink_SP2-1	B4:43:0D:11:32:38	192.168.10.7	Wlan	DHCP
Unknown Name	08:D8:33:F3:68:7D	192.168.10.8	Wlan	DHCP
android-5a8a463	CC:07:E4:12:7A:35	192.168.10.9	Wlan	DHCP
USER-T6-PC	80:00:0B:32:A9:6F	192.168.10.10	Wlan	DHCP
Banana	F0:DB:E2:98:77:48	192.168.10.11	Wlan	DHCP
android-f4710b1	F0:25:B7:48:49:E0	192.168.10.12	Lan	DHCP
android-e5bcd29	88:32:9B:EF:17:6F	192.168.10.13	Wlan	DHCP
CAPdeAir-3	34:36:3B:6F:58:76	192.168.10.14	Lan	DHCP
Miless-iPhone-4	78:7E:61:B5:4D:35	192.168.10.19	Wlan	DHCP
USER-of1-PC	08:57:00:88:47:B9	192.168.10.22	Wlan	DHCP
Unknown Name	5C:59:48:F8:CA:0F	192.168.10.25	Wlan	DHCP
IPCAM	00:A1:DF:F5:59:73	192.168.10.26	Lan	DHCP
IPCAM	48:02:2A:04:75:EF	192.168.10.27	Wlan	DHCP

- 12) Binding the IP Camera MAC with the HOST Reserved MAC Address.

Note: If the IP Camera connects with the HOST via wireless, please binding the wireless connection MAC address with the HOST reserved MAC address together. If the IP Camera connects with the HOST via cable, please binding the LAN connection MAC address with the HOST reserved MAC address together.

- Guide
- Setup Wizard
- Device Mode
- Language
- Config
- System Status
- LAN Config
- Device List
- NTP Config
- DDNS Config
- Port Forward
- sPort Forward
- Log Record
- Wireless
- Status
- Basic Config
- Encryption
- + System
- Log Out

LAN Config

IP Configuration

IP Address:

Subnet Mask:

DHCP Server

Enable Service: Enable

Start Address:

End Address:

The Address Lease: days

Reserved Address

Hostname	MAC	IP Address	Enable
IPcam	48:02:2A:04:75:EF	192.168.10.220	<input checked="" type="checkbox"/>
		192.168.10.221	<input type="checkbox"/>
		192.168.10.222	<input type="checkbox"/>
		192.168.10.223	<input type="checkbox"/>
		192.168.10.224	<input type="checkbox"/>

- 13) Configure the sPort Forward (using for remote monitoring).

sPort Forward

Application Name	External Port	Internal Port	Protocol	IP Address	Enable
camera	20000	81	Both	192.168.10.220	<input checked="" type="checkbox"/>
			Both	192.168.10.	<input type="checkbox"/>
			TCP	192.168.10.	<input type="checkbox"/>
			TCP	192.168.10.	<input type="checkbox"/>
			TCP	192.168.10.	<input type="checkbox"/>
			TCP	192.168.10.	<input type="checkbox"/>
			TCP	192.168.10.	<input type="checkbox"/>
			TCP	192.168.10.	<input type="checkbox"/>
			TCP	192.168.10.	<input type="checkbox"/>
			TCP	192.168.10.	<input type="checkbox"/>
			TCP	192.168.10.	<input type="checkbox"/>
			TCP	192.168.10.	<input type="checkbox"/>

- 14) Restart the IP Camera once more, enter the Device list of the HOST, check the information of the IP Camera, such as the MAC Address, IP Address, Connection Mode, the Mode of Distribution. Recording the IP Address, this is used for the camera configuration on the APP side.

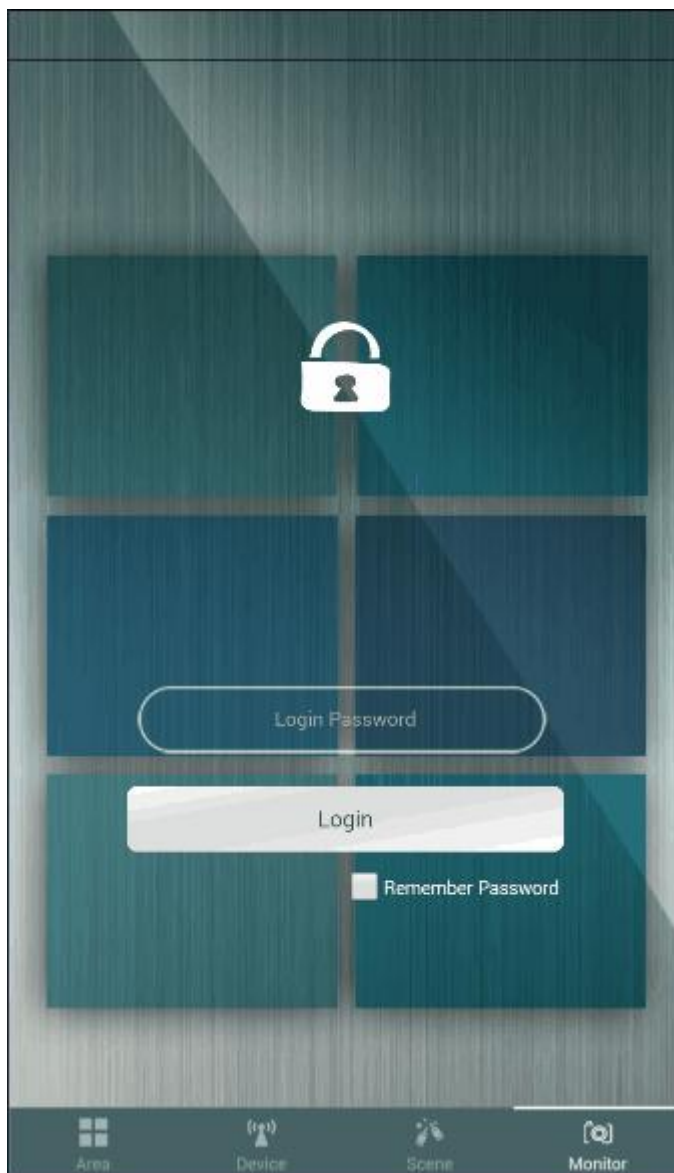
Device List

Hostname	MAC	IP Address	WLAN/LAN	Mode of Distribution
IPCAM	48:02:2A:04:75:EF	192.168.10.220	Wlan	Reserved
Broadlink_RM2-a	B4:43:0D:AA:6A:64	192.168.10.2	Wlan	DHCP
android-5e03671	64:B4:73:4C:A8:7E	192.168.10.3	Wlan	DHCP
Broadlink_SPMIN	B4:43:0D:96:09:3E	192.168.10.4	Wlan	DHCP
Broadlink_EAIR-	B4:43:0D:70:05:04	192.168.10.5	Wlan	DHCP
Broadlink_RM2-3	B4:43:0D:38:77:70	192.168.10.6	Wlan	DHCP
Broadlink_SP2-1	B4:43:0D:11:32:38	192.168.10.7	Wlan	DHCP
Unknown Name	08:D8:33:F3:68:7D	192.168.10.8	Wlan	DHCP
android-5a8a463	CC:07:E4:12:7A:35	192.168.10.9	Wlan	DHCP
USER-T6-PC	80:00:0B:32:A9:6F	192.168.10.10	Wlan	DHCP
Banana	F0:DB:E2:98:77:48	192.168.10.11	Wlan	DHCP
android-f4710b1	F0:25:B7:48:49:E0	192.168.10.12	Lan	DHCP
android-e5bcd29	88:32:9B:EF:17:6F	192.168.10.13	Wlan	DHCP
CAPdeAir-3	34:36:3B:6F:58:76	192.168.10.14	Lan	DHCP
Miless-iPhone-4	78:7E:61:B5:4D:35	192.168.10.19	Wlan	DHCP
USER-of1-PC	08:57:00:88:47:B9	192.168.10.22	Wlan	DHCP
Unknown Name	5C:59:48:F8:CA:0F	192.168.10.25	Wlan	DHCP
IPCAM	00:A1:DF:F5:59:73	192.168.10.26	Lan	DHCP


3. Do the following configuration on the APP.

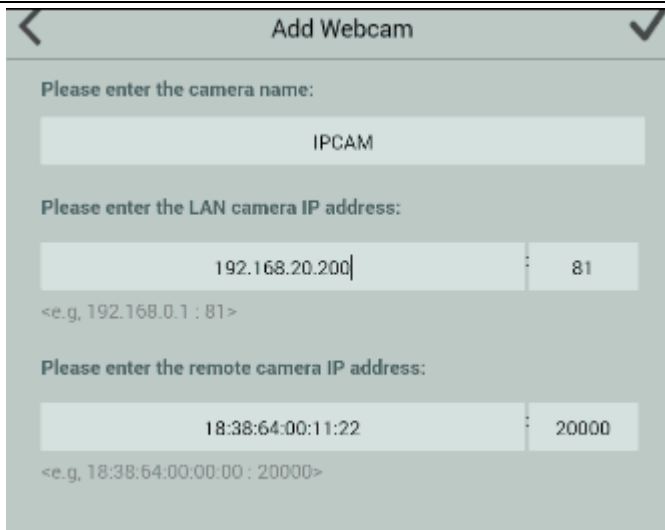
- 1) Enter the Monitor interface, and input the Security Password, click "OK".

Note: the Security Password is consistent with the initial value of the APP login password.

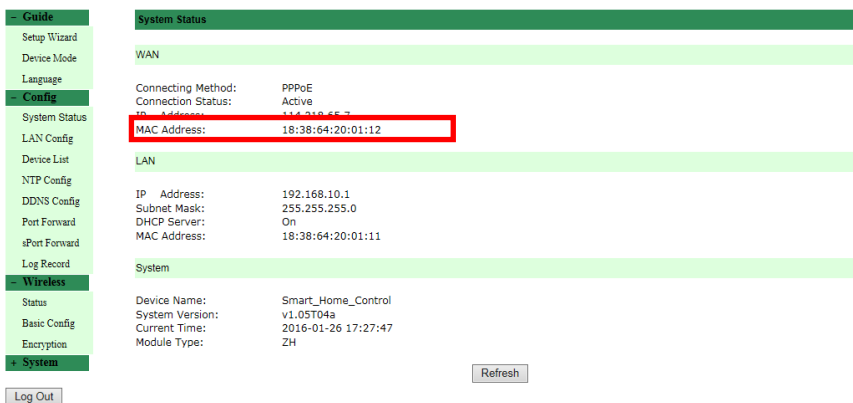


2) Add Webcam

Select “Add”, enter the camera name, LAN camera IP address, remote camera IP address, then click “”.



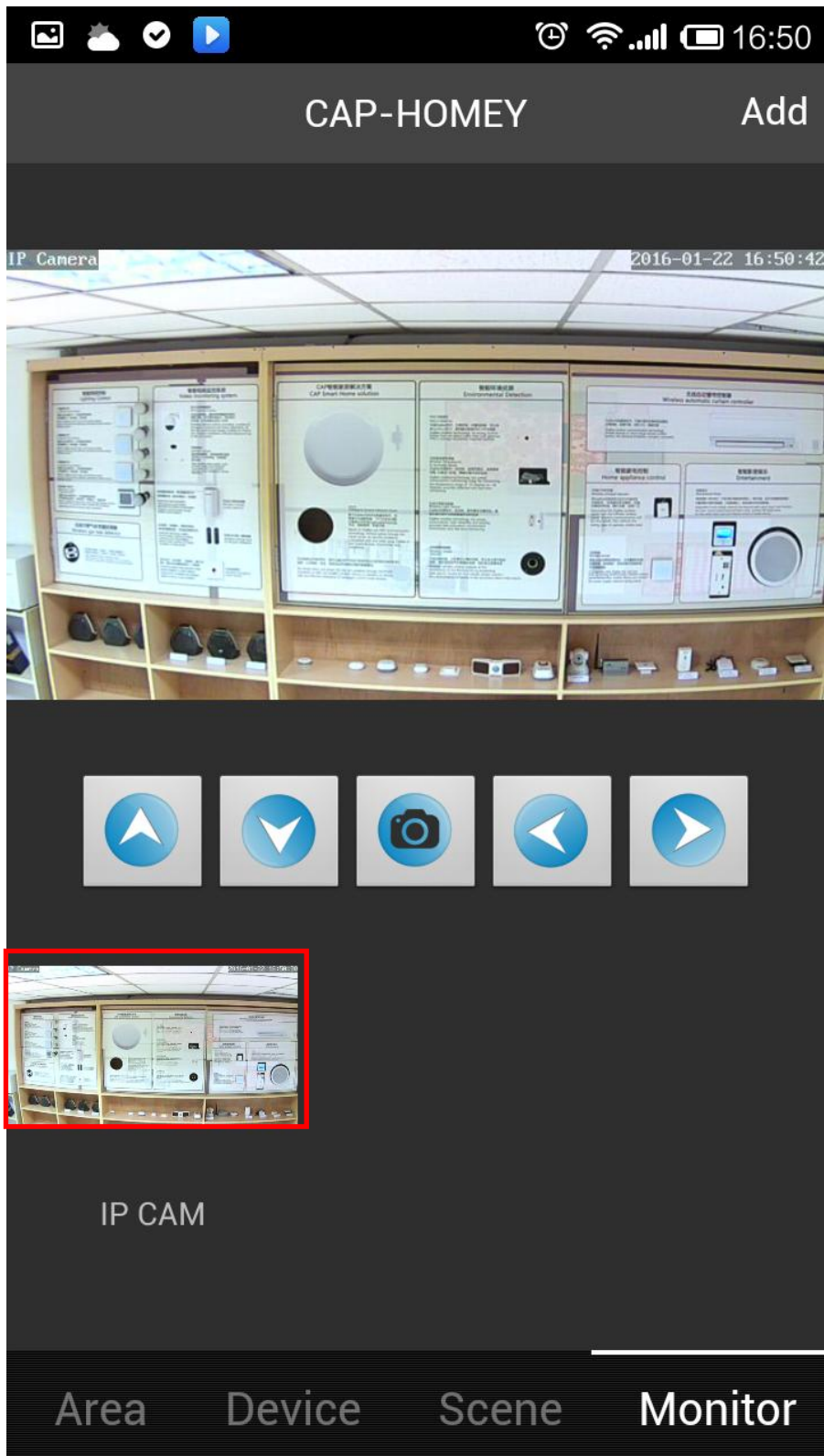
- ✧ **LAN camera IP address:** Input the camera IP Address, such as: input 192.168.10.220:81, 192.168.10.220 is the IP address of the camera, 81 is the HTTP port of the camera.
- ✧ **Remote camera IP address:** Input the WAN IP of the HOST or DDNS domain name, such as: input 114.218.65.7:20000 or qq314831545.oicp.net:20000, 114.218.65.7 is the WAN IP of the HOST, 20000 is the External Port of the HOST in the sPort Forward interface (qq314831545.oicp.net is the DDNS Domain Name, 20000 is the External Port of the HOST in the sPort Forward interface).



System Status	
WAN	
Connecting Method:	PPPoE
Connection Status:	Active
IP Address:	114.218.65.7
MAC Address:	18:38:64:20:01:12
LAN	
IP Address:	192.168.10.1
Subnet Mask:	255.255.255.0
DHCP Server:	On
MAC Address:	18:38:64:20:01:11
System	
Device Name:	Smart_Home_Control
System Version:	v1.05T04a
Current Time:	2016-01-26 17:27:47
Module Type:	ZH

3) Play Webcam

As shown in the figure below, the picture in the red box is the login snapping picture, click on the picture, and you can see the real-time monitoring screen.



Installation Instructions

INSTALLATION TIPS

The IP Camera is small and exquisite, can be arbitrarily placed on the desk, side mounted on the wall and also can be inverted installation on the ceiling. You can decide which way to install this camera according to the needs. The steps of the wall and ceiling installation are as follows:

- i. Choose the right installation location.

Firstly, the location must be close to the power plug, because we need to plug the power adapter. Secondly, the selected location should have a widely vision.

- ii. To drill holes in the installation position, then screw and fix the base to the proper position.
- iii. Fix the bracket on the base.
- iv. Fix the camera on the bracket, plug in the power, check whether the camera can work normally (up/down/left /right rotation, etc.).

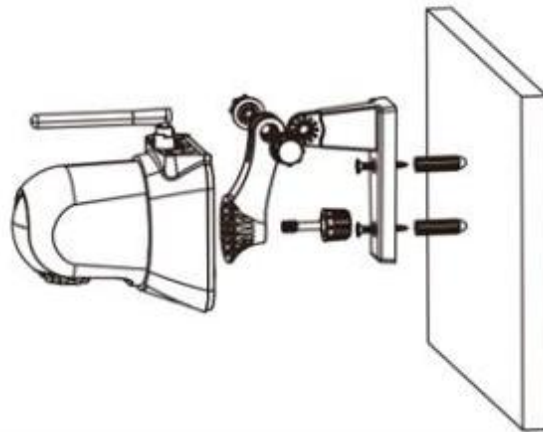


Fig.1 Install on the Wall

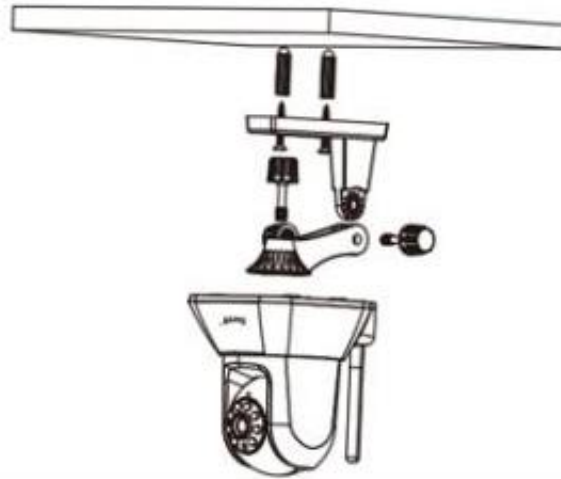


Fig.2 Install on the Ceiling

Safety Notice

- This device is a wireless communication product, please do not place the device to work in the metal container, in case the signal is blocked.
- Keep the device away from a strong sunlight, humidity, high temperature, dust or mechanical shock.
- Keep the device away from acid-base and other corrosive solids, liquids, gases, to avoid damage.
- Pay attention to the use of the range.