

DOOR/WINDOW SENSOR

**CT-SMZB2001-HM**

Door/Window Sensor

Introduction

This is a Smart Door/Window Sensor, adopts extra low power consumption ZigBee wireless module, long battery use life. Detect door or window's status by closing or opening magnet part with detector. Designed with double reeds, it can be used in different direction open doors or windows, easy installation and flexible to use. The product is suitable for residence, villa, houses, workshop, mall, warehouse, office building, bank and many other places for anti-burglar alarm.

Technical Information

- Compatible with any ZigBee network controller
- Battery powered and cost savings
- Support the scene control

Specifications

- Radio protocol: ZigBee (IEEE 802.15.4)
- Power supply: DC 3V (1 pc CR2032 button battery)
- Standby current : $\leq 5\mu\text{A}$
- Alarm current : $\leq 30\text{mA}$
- Detection distance : $> 20\text{mm}$
- Temperature range : $-10 \sim 50 \text{ }^\circ\text{C}$
- Humidity range: $\leq 95\% \text{ RH}$ (no condensation)
- RF range : $\geq 70\text{m}$ (in an open area)
- Dimension : $65 \times 30 \times 12.5\text{mm} / 60 \times 13 \times 12.5(\text{magnet})\text{mm}$

Operation

As shown in figure 1, there is a Reset button on the sides of the Smart Door/Window Sensor which is used to carry out inclusion, exclusion or reset. its function is introduced as follows:.

(1) If the Smart Door/Window Sensor has not been included into the network, short press the Reset button to enter the network inclusion condition, at this time the network status indicator LED flash (3 times/second). If the network inclusion success, the network status indicator LED will long on for 2 seconds and then go out. If the network inclusion failure, the network status indicator LED will go out.

(2) If the Smart Door/Window Sensor has been included into the network, and want to include into the new network, you must reset the device. First, press and hold the Reset button until network status indicator LED flash once, and then long press the Reset button for 10 seconds,

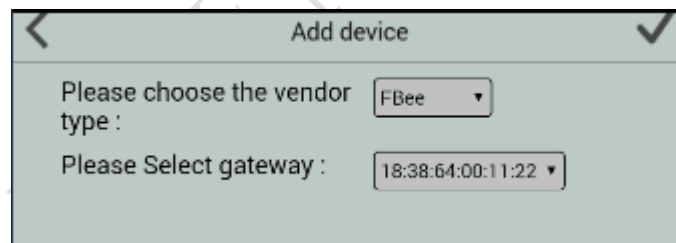
LED will long on for 3 seconds and then go out. Note: Please loosen the button when the indicator LED long on 3 seconds, otherwise the system will restart and then into and network inclusion status.



Fig.1

ZIGBEE NETWORK INCLUSION

- 1) Connect the power supply (1 pc CR2032 button battery).
- 2) Press the Reset button for 2 seconds until see green LED blinking fast (Refer to the above steps).
- 3) Choose "FBee" to enter the Network Inclusion mode on the APP, then click "✓".



- 4) When prompt a message "Request Access Success", please go to the device list interface, and refresh the device list, the device will be displayed.

Installation Instructions

It's recommended to install the Door/Window Sensor in dry interior locations.

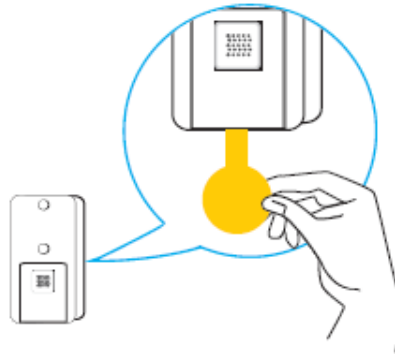
DOOR/WINDOW DETECTOR INSTALLATION

Decide which doors/windows to be protected by Door/Window Detectors, (usually the front and back doors as a minimum will have Door/Window Detectors fitted). Additional detectors may also be fitted where required to other vulnerable doors or windows (e.g. garage, patio/conservatory doors etc.).

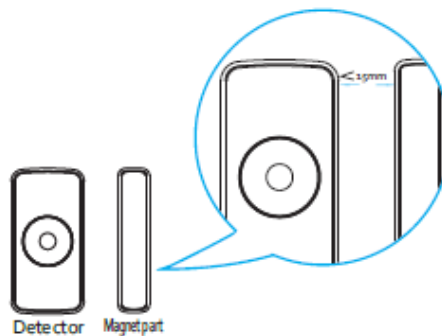
1. Ensure that the system properly powered

Factory default built in a CR2032 battery inside the detector and used a Mylar film to isolate batteries from electric circuit of the detector. Remove the battery Mylar film when ready to let the detector work.

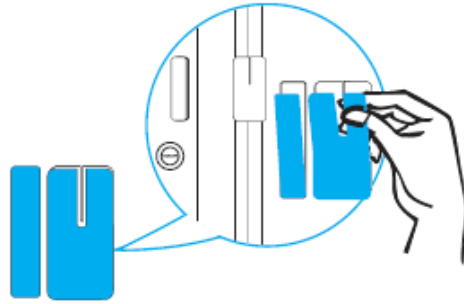
If there is no battery inside the detector or need to replace a new battery, please insert the battery first.



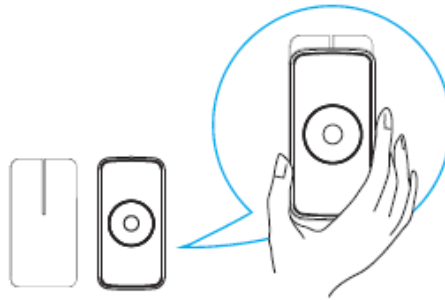
2. Ensure that the parallel gap between the magnet and detector is less than 15mm and that the matching line on the magnet is pointing towards and aligned with the line on the detector.



3. Using the adhesive tape to fit detector on the door or window. Fit the magnet to the moving part of the door/window opposite the detector using the adhesive tape.



4. Insert detector to fixed hang board.



5. Detach or close the magnet from the Detector, the LED on the detector will illuminate.
6. After proper installation and test, put the battery cover back to the detector and the detector enters the normal.

Safety Notice

- This device is a wireless communication product, please do not place the device to work in the metal container, in case the signal is blocked.
- The working temperature is -10°C to $+50^{\circ}\text{C}$.
- Keep the device away from a strong sunlight, humidity, high temperature or mechanical shock.
- Keep the device away from acid-base and other corrosive solids, liquids, gases, to avoid damage.