

SMART MOTION SENSOR

**CT-SMZB2004-HM**

Smart motion sensor

Introduction

This product is Smart Motion Sensor, adopts extra low power consumption ZigBee wireless network and automatic threshold adjustment technology to enhance the stability of the detector, efficiently anti-false alarm. Automatic temperature compensation technology, can efficiently prevent detectors from the decrease in sensitivity resulted from the temperature variation. Suitable to be used for safety protection of residential, villas, factories, shopping malls, warehouses, office buildings, banks, computer room and other places.

Technical Information

- Compatible with any ZigBee network controller
- Battery powered and cost savings
- High sensitivity, small size
- Support the scene control

Specifications

- Radio protocol: ZigBee (IEEE 802.15.4)
- Power supply: DC 3V (1 pc 3V CR2450 Button battery))
- Standby current : $\leq 16\mu\text{A}$
- Alarm current : $\leq 30\text{mA}$
- Detecting Angle: 110 degrees
- Installation Height: 2.1 m
- Detecting Distance: 9-12 m
- Working Temperature: $-10^{\circ}\text{C} \sim +50^{\circ}\text{C}$
- Environment Humidity: $\leq 95\% \text{RH}$ (no congelation)
- RF range: $\leq 100 \text{ m}$ (open area)
- Anti RF interference: 10MHz-1GHz 20V/m
- Dimension: 65x65x28mm

Operation

As shown in figure 1, there is a Reset button on the sides of the Smart Motion Sensor which is used to carry out inclusion, exclusion or reset. its function is introduced as follows:

(1) If the Smart Motion Sensor has not been included into the network, short press the Reset button to enter the network inclusion condition, at this time the network status indicator LED flash (3 times/second). If the network inclusion success, the network status indicator LED will long on for 2 seconds and then go out. If the network inclusion failure, the network status indicator LED will go out.

(2) If the Smart Motion Sensor has been included into the network, and want to include into the new network, you must reset the device. First, press and hold the Reset button until network status

indicator LED flash once, and then long press the Reset button for 10 seconds, LED will long on for 3 seconds and then go out. Note: Please loosen the button when the indicator LED long on 3 seconds, otherwise the system will restart and then into and network inclusion status.

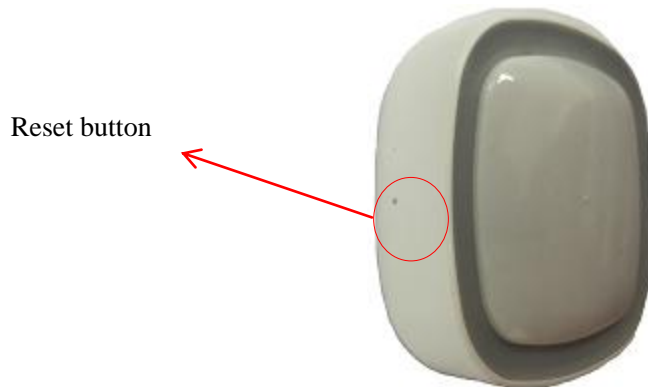

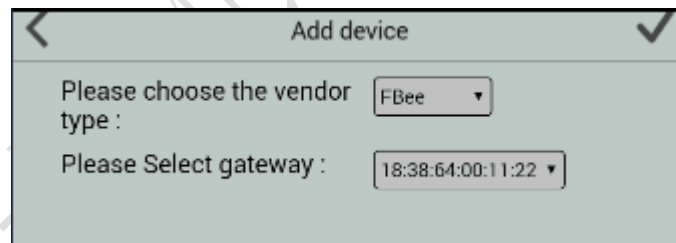


Fig.1

ZIGBEE NETWORK INCLUSION

- 1) Connect the power supply (1 pc CR2450 button battery).
- 2) Press the Reset button for 2 seconds until see green LED blinking fast (Refer to the above steps).
- 3) Choose "FBee" to enter the Network Inclusion mode on the APP, then click "".



- 4) When prompt a message "Request Access Success", please go to the device list interface, and refresh the device list, the device will be displayed.

Installation Instructions

DETECTING RANGE

- A. Detecting Angle: 110 degrees
- B. Installation Height: 2.1 m
- C. Detecting Distance: 9-12 m

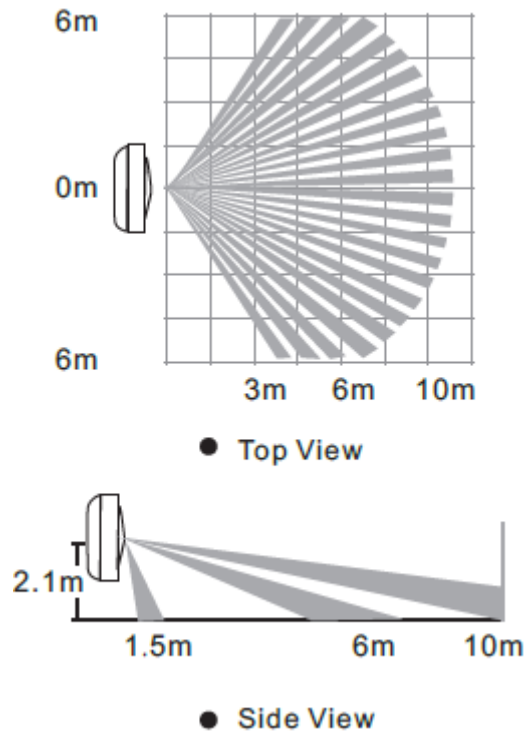


Fig.2

INSTALLATION TIPS



- Please avoid installation in outdoor, places with pets, air-condition, heat source nearby, places with direct sunshine and places under rotating objects.
- The installation surface should be solid without vibration.
- Please install the detector in places where an intruder may pass easily.



Fig.3

INSTALLATION STEPS

1. Ensure that the system properly powered

Removing the Mylar film to make device on power. Device will in warm-up state when red LED flashes, after 30 seconds LED off, warm-up complete.

Factory default built in a CR2450 battery inside the detector and used a Mylar film to isolate batteries from electric circuit of the detector. Remove the battery Mylar film when ready to let the detector work.

If there is no battery inside the detector or need to replace a new battery, please insert the battery first.

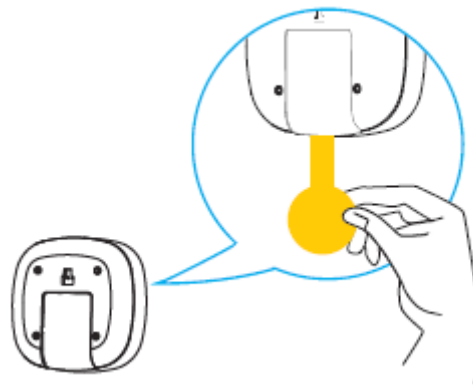


Fig.4

2. Paste device in the area required after removing double-side tap on the back side.

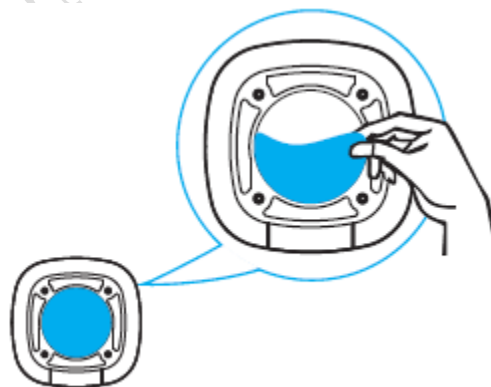


Fig.5

3. Note: Please keep arrow part in the picture upwards. Put the detector into the bracket.

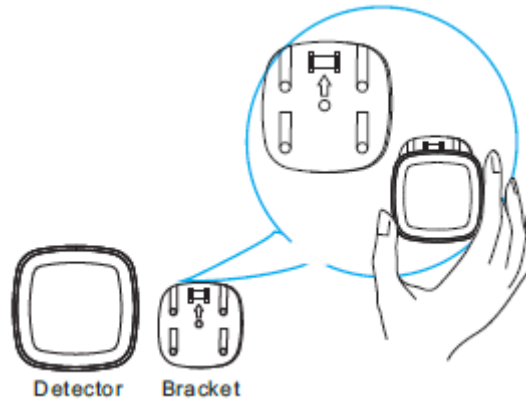


Fig.6

Safety Notice

- This device is a wireless communication product, please do not place the device to work in the metal container, in case the signal is blocked.
- The working temperature is -10°C to $+50^{\circ}\text{C}$.
- Keep the device away from a strong sunlight, humidity, high temperature or mechanical shock.
- Keep the device away from acid-base and other corrosive solids, liquids, gases, to avoid damage.