

Carbon monoxide detector

**CT-SMZB2012-HM**

Carbon monoxide detector

Introduction

This product is a smart carbon monoxide detector, Uses the low power design ZigBee wireless network technology, used to detect gases, carbon monoxide alarm with high-performance electrochemical sensor, sound and light alarm output. It is characterized by high stability, low power consumption and high sensitivity. Easy to install.

This product is widely used in basement, hotel, kitchen, toilet and other places where carbon monoxide gas may be present.

Technical Information

- Compatible with ZigBee network controller
- Battery powered and cost savings
- Sensitivity and small size

Specifications

- Radio protocol: ZigBee (IEEE 802.15.4)
- Power supply: DC 3V(1 * CR123A lithium battery)
- Standby current : $\leq 20\mu\text{A}$
- Alarm current : $\leq 60\text{mA}$
- alarm concentration: 30 PPM alarm 120 minutes, 50 PPM 60 ~ 90 minutes alarm alarm 100 PPM 10 ~ 40 minutes, 3 minutes to 300 PPM: ZigBee Network
- RF range : 100m (in an open area)
- Temperature range : $-10 \sim 50\text{ }^{\circ}\text{C}$
- Humidity range: $\leq 95\% \text{ RH}$
- Dimension : $60 \times 60 \times 49.2\text{mm}$

Operation

- As shown in figure 1, the carbon monoxide detector has a reset button on the side, which features as following:

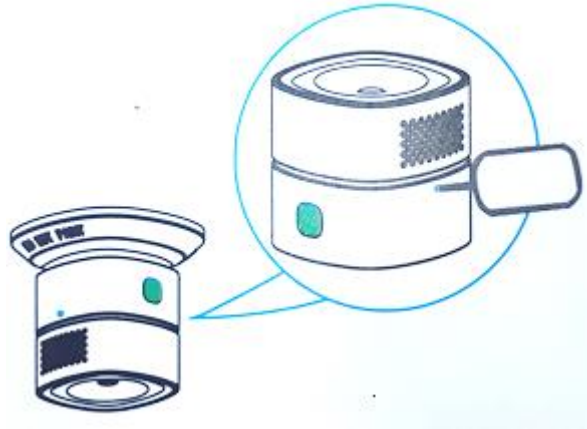



图1

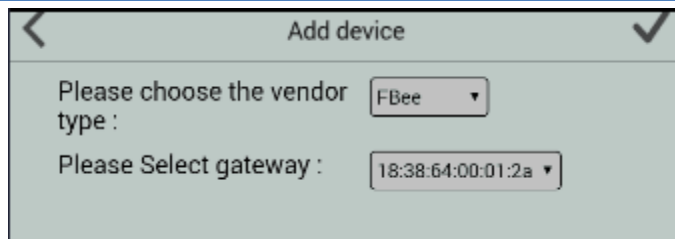
- (1) When the carbon monoxide detector is in the unconnected state, push the reset button, after two seconds, the green light will flash, the green light will be bright 3 seconds, and the network will be successful. If the network fails, the net indicator is extinguished and returns to the unconnected state.
- (2) If carbon monoxide detectors are in a state of connected to the ZigBee gateway, if you want to join the new network, you must first push the reset button, long press for 10 seconds (disconnect network) until the green network status indicator light 2 seconds long, suggests that logout successfully.

ZIGBEE NETWORK INCLUSION

- 1) Connect the power supply
- 2) Press the Reset button for 2 seconds until the green LED blinking fast (Refer to the above steps).

Note: if you need to change the network, you need to push the reset button for 10 seconds

- 3) Choose "FBee" to enter the Network Inclusion mode on the APP, then click " ".



- 4) When prompt up a message “Request Access Success”, please go to the device list interface, and refresh the device list, the device will be displayed.

Installation Instructions

When the carbon monoxide detector is set up, the probe condition is entered. When a carbon monoxide detector detects a carbon monoxide gas, it alerts the crew to safety measures. In addition, if the user do the SMS alarm or email alarm configuration, such as when the trigger alarm, mobile intelligent terminal will receive the alarm information, the user click the alarm message to see the detailed information, let the user know and decide whether to take corresponding measures in a timely manner.

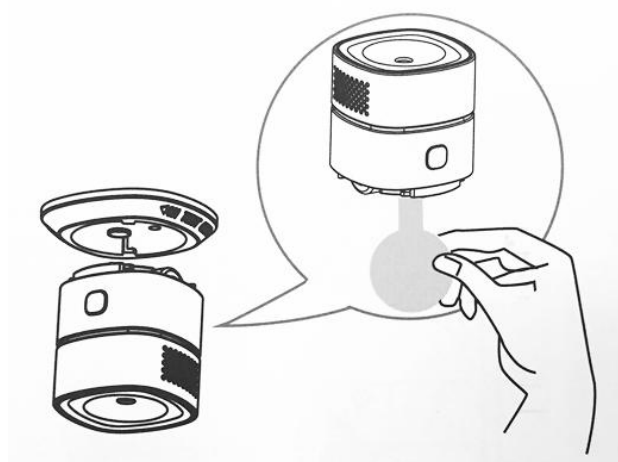
In order to ensure the detection effect, this product should be placed in the location of easy connection, not installed in the environment such as rain water, lampblack, water vapor. In addition, when installing this detector, you can simply install a 3V CR123A lithium battery properly.

Installation steps

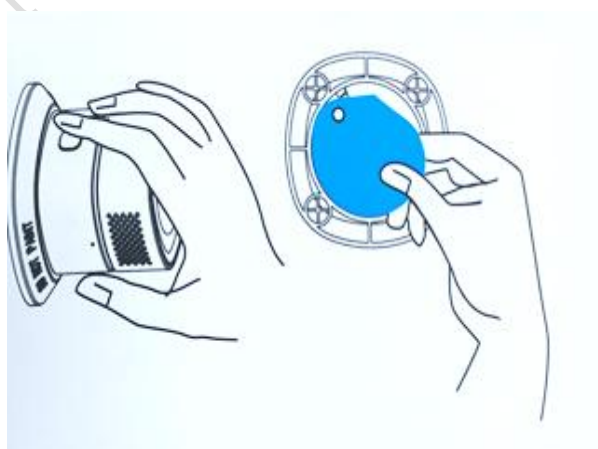
1. Ensure that the system properly powered.

Factory default built in a battery inside the detector and used a Mylar film to isolate batteries from electric circuit of the detector. Remove the battery Mylar film when ready to let the detector work.

If there is no battery inside the detector or need to replace a new battery, please insert the battery first.



2. Make sure the CO detector is connected to the ZigBee gateway.
3. Install the body of the carbon monoxide detector on the base.
4. Tear down the double-sided adhesive film on the base of the mount and attach it to the appropriate area.



Safety Notice

- This device is a wireless communication product, please do not place the device to work in the metal container, in case the signal is blocked.
- Keep the device away from a strong sunlight, humidity, high temperature or mechanical shock.
- Keep the device away from acid-base and other corrosive solids, liquids, gases, to avoid damage.