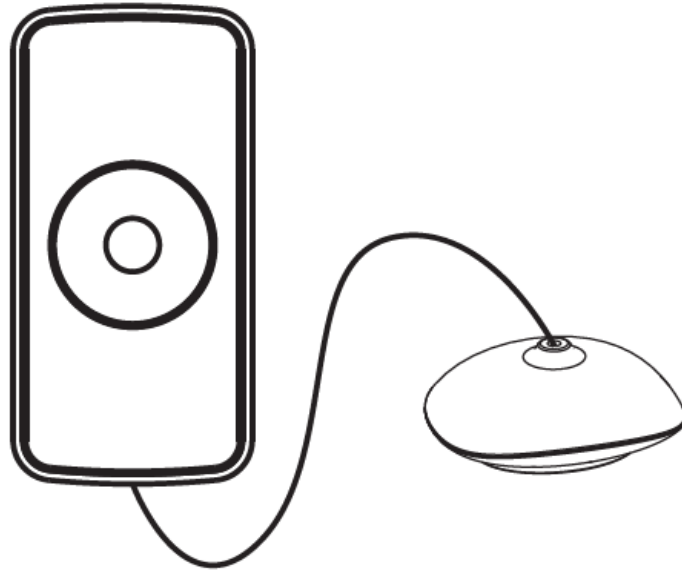


Smart Water Leakage Sensor



CT-SMZB2013-HM

Smart Water Leakage Sensor

Introduction

This product adopts ZigBee wireless module. Super low power consumption circuit design makes longer battery lifespan. Separate design of body and sensor, efficiently prevent the influence resulted from high humidity. High Precision and sensitivity, it is applicable for Basement, machine room, hotel, water tower, pool, swimming pool, solar, kitchen, bathroom and other leaks or water overflow detection.

Technical Information

- Compatible with any ZigBee network controller

- Battery powered and cost savings
- Sensitivity and small size

Specifications

- Radio protocol : ZigBee (IEEE 802.15.4)
- Power supply : DC 3V (1 pc CR2032 button battery))
- Standby current : $\leq 5\mu\text{A}$
- Alarm current : $\leq 30\text{mA}$
- Networking way : ZigBee Mesh Network
- RF range : 70m (in an open area)
- Temperature range : $-10 \sim 50\text{ }^{\circ}\text{C}$
- Humidity range : $\leq 95\% \text{ RH}$
- Dimension : $60 \times 60 \times 12.5\text{mm}$
- Sensor dimension: $28.3 \times 26.5 \times 12.2\text{mm}$

Operation

As shown in figure 1, there is a Reset button on the sides of the Smart Water Leakage Sensor which is used to carry out inclusion, exclusion or reset. its function is introduced as follows:

(1) If the Smart Water Leakage Sensor has not been included into the network, short press the Reset button to enter the network inclusion condition, at this time the network status indicator LED flash (3 times/second). If the network inclusion success, the network status indicator LED

will long on for 2 seconds and then go out. If the network inclusion failure, the network status indicator LED will go out.

(2) If the Smart Water Leakage Sensor has been included into the network, and want to include into the new network, you must reset the device. Please long press the Reset button for 10 seconds, LED will long on for 2 seconds and then go out.

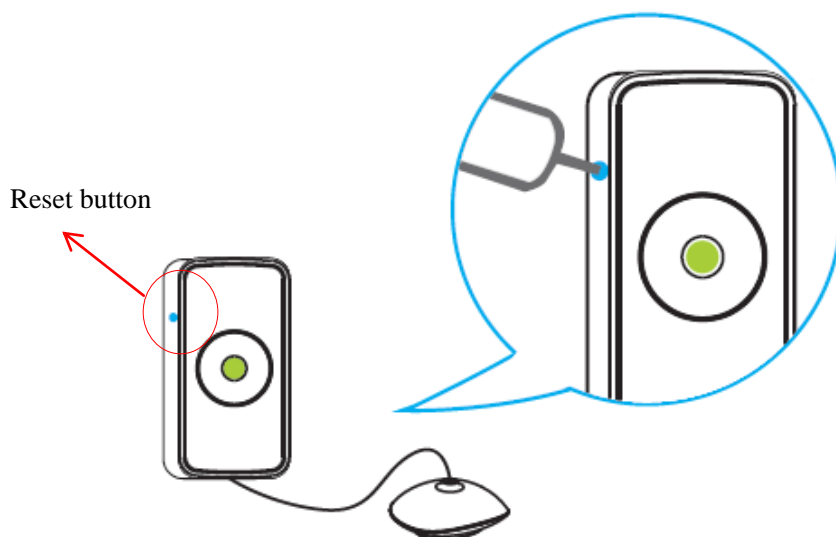
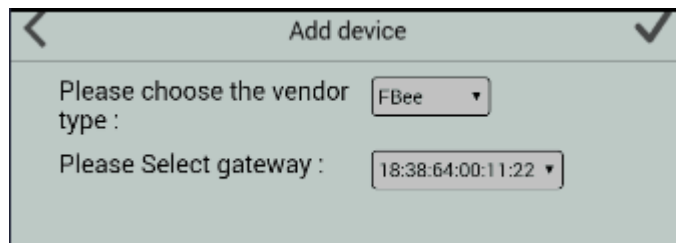


Fig.1

ZIGBEE NETWORK INCLUSION

- 1) Connect the power supply (1 pc CR2032 button battery).
- 2) Press the Reset button for 2 seconds until see green LED blinking fast (Refer to the above steps).
- 3) Choose "FBee" to enter the Network Inclusion mode on the APP, then click "✓".



- 4) When prompt a message "Request Access Success", please go to the device list interface, and refresh the device list, the device will be displayed.

Installation Instructions

After the Smart Water Leakage Sensor completing the network inclusion, it will enter the detection state. When the Smart Water Leakage Sensor detects the measured surface water, it will send alarm signal, to remind the staff to take safety measures. In addition, if the user do the SMS alarm or Email alarm configuration. When the alarm is triggered, mobile terminal will receive alarm information, you can clicks the alarm information to view the detailed information.

In order to ensure the detection effect, this product should be placed in an easy linking area, do not install it at position of have rainwater, lampblack, water vapor., etc (Figure 2).

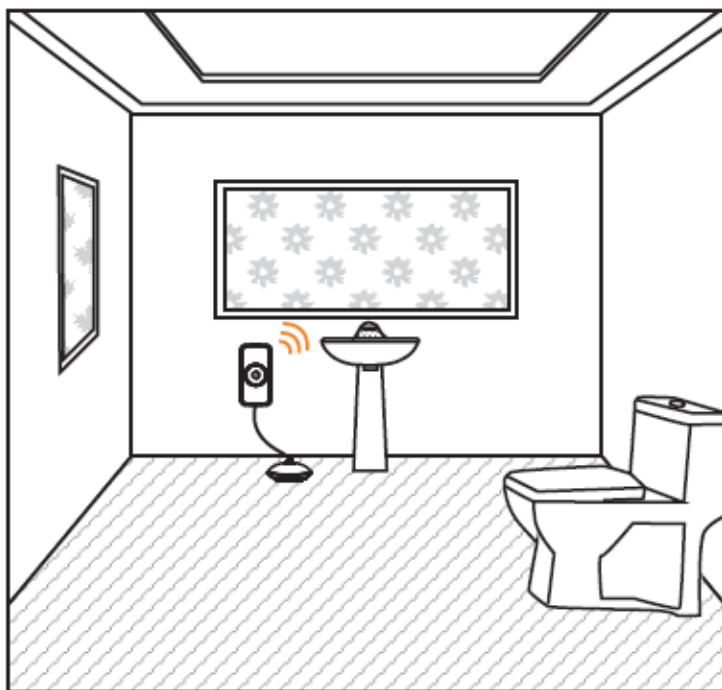


Fig.2

Smart Water Leakage Sensor Installation

1. Ensure that the system properly powered

Factory default built in a CR2032 battery inside the detector and used a Mylar film to isolate batteries from electric circuit of the detector. Remove the battery Mylar film when ready to let the detector work.

If there is no battery inside the detector or need to replace a new battery, please insert the

battery first.

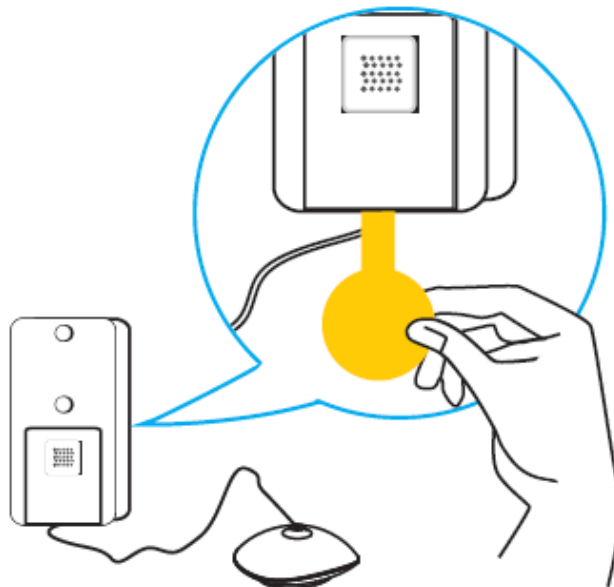


Fig.3

2. Make sure the device has been included into the network normally.
3. Tear off the gummed film; stick the equipment in the required area.

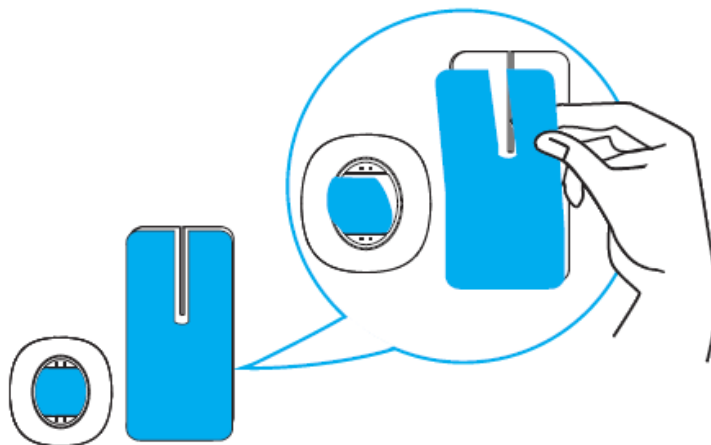


Fig.4

4. Insert detector to fixed hang board.

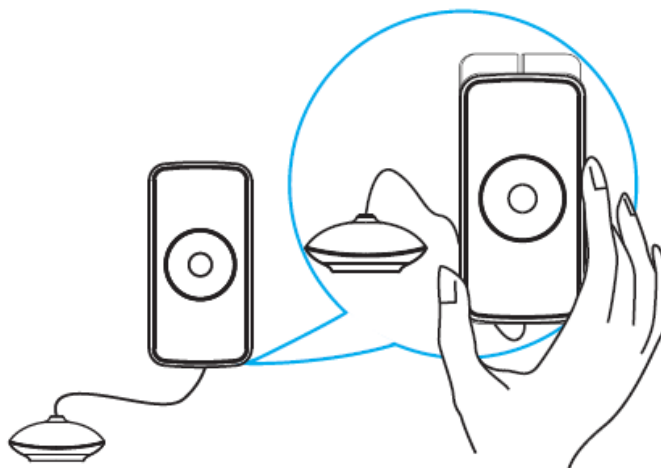


Fig.5

Safety Notice

- This device is a wireless communication product; please do not place the device to work in the metal container, in case the signal is blocked.
- The working temperature is -10℃ to +50℃.
- Install water linkage detector at easy linking area.
- Don't install water leakage detector at position of have rainwater, lampblack, water vapor., etc
- Don't install water linkage detector at water immersion position.
- Please pay attention to the service life of the battery, replace the battery in time.
- Please pay attention if it alarms. Besides proper use of alarm, we should also strengthen the consciousness of fire safety.